



MONTHLY MEMBERSHIP PROGRESS REPORT

District 105 A

Results as of: 04/30/2018

GMT: JOOST PAIJMANS

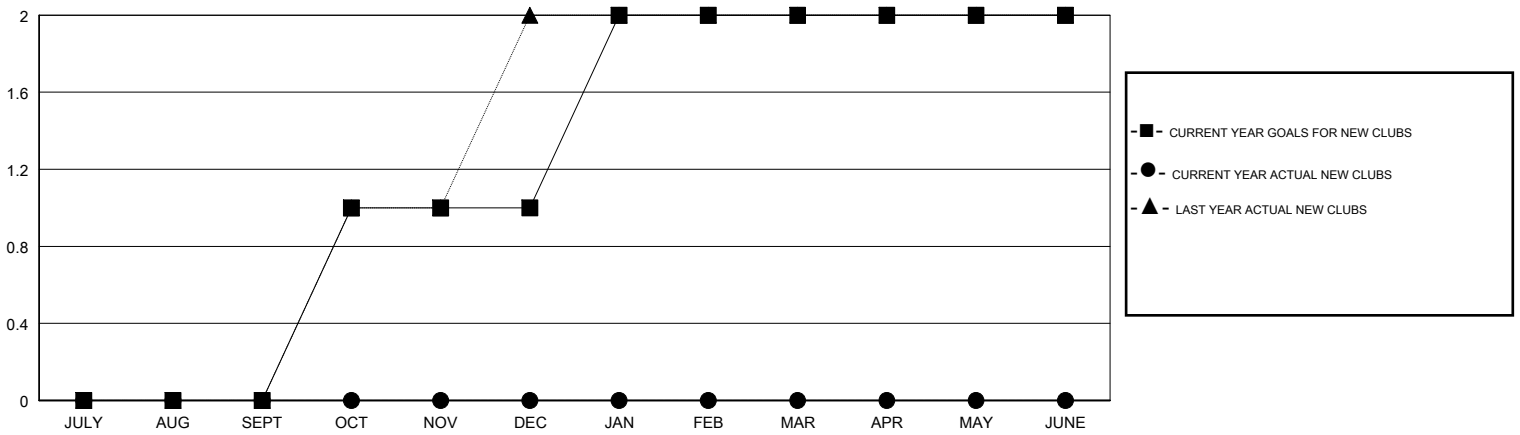
LOCATION ENGLAND

GMT CA

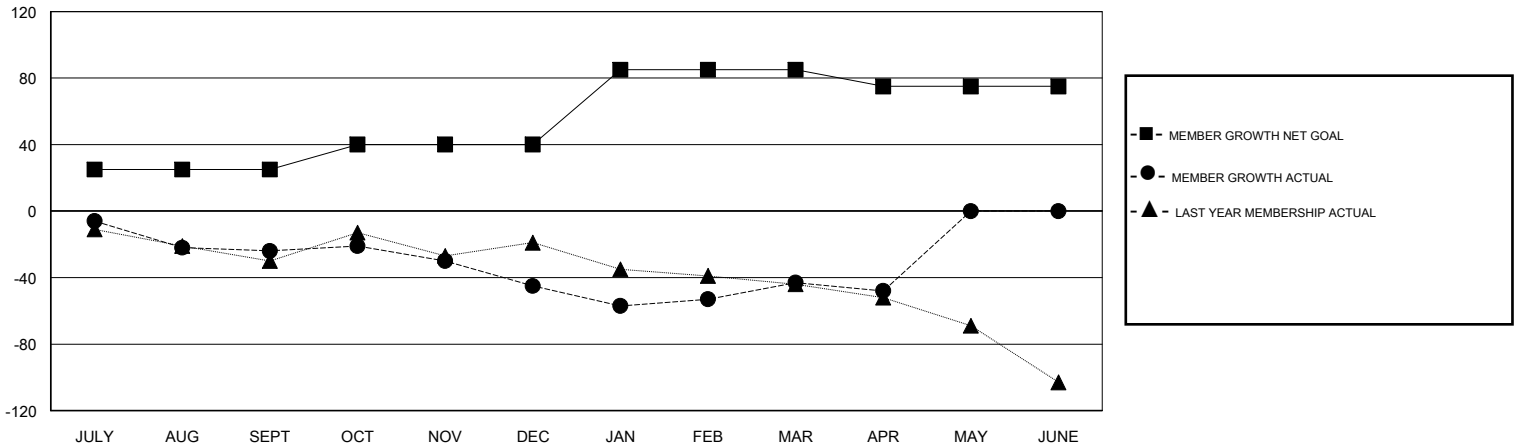
Clubs			
RESULTS FOR 2017-2018			
QUARTER	NEW CLUB GOAL	NEW CLUBS	DROPPED CLUBS
JULY/AUG/SEPT	0	0	1
OCT/NOV/DEC	1	0	1
JAN/FEB/MAR	1	0	1
APR/MAY/JUNE	0	0	0

Members			
RESULTS FOR 2017-2018			
QUARTER	MEMBER GROWTH NET GOAL	MEMBER GROWTH ACTUAL	DROPPED MEMBERS ACTUAL (including transfers)
JULY/AUG/SEPT	25	25	48
OCT/NOV/DEC	15	22	40
JAN/FEB/MAR	45	41	35
APR/MAY/JUNE	-10	5	10

GOALS AND ACTUAL NEW CLUBS CUMULATIVE



GOALS AND ACTUAL MEMBERS CUMULATIVE



DROPPED CLUBS: 3

38 CLUBS OF 71 ADDED 1 OR MORE NEW MEMBERS

GENDER DISTRIBUTION

MALE 1,022 (74.27%)
 FEMALE 354 (25.73%)
 Women Percentage Fiscal Year Goal: 25%

DROPPED MEMBERS

[CLICK HERE FOR CUMULATIVE MEMBERSHIP DATA](#)

DECEASED	13
CLUB CANCELLED	7
OTHER	112
TOTAL	132

TOTAL FAMILY UNIT MEMBERS	99
FAMILY MEMBERS PAYING HALF DUES	50